



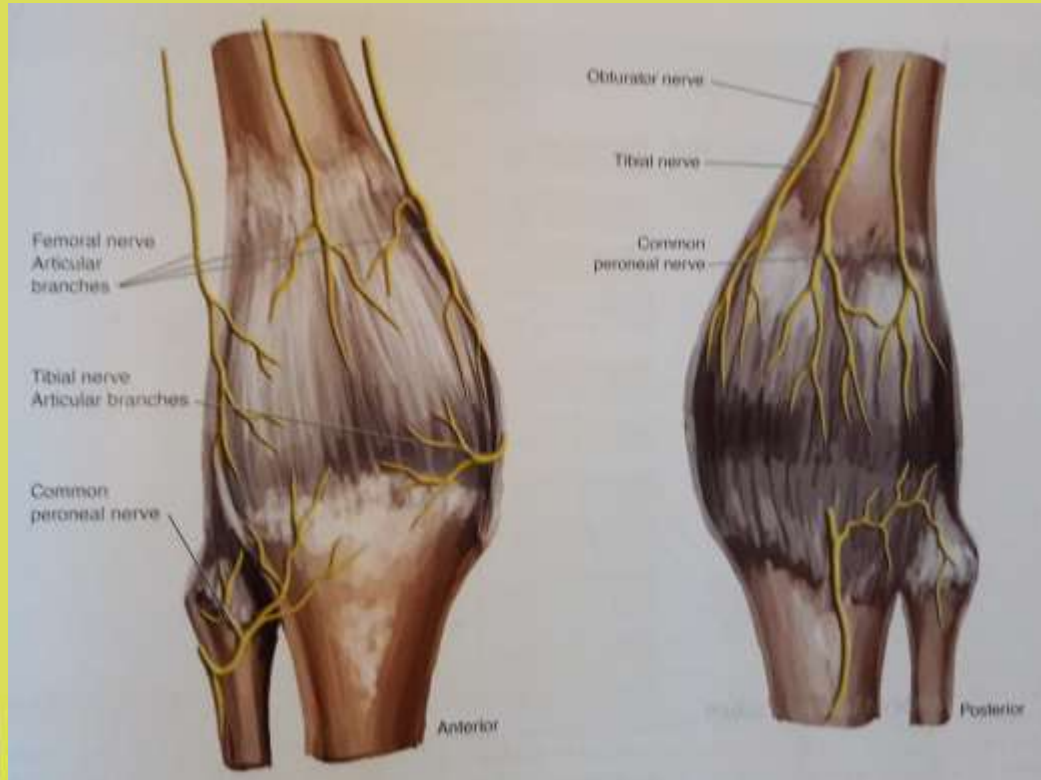
Interventionele behandeling van chronische pijn na totale knie- en heupprothese

**Thibaut Vanneste
Roel Mestrum
Anesthesiologie – MPC ZOL**

Interventionele behandeling van chronische pijn na totale knie- en heupprothese

- Intra-articulaire injectie
- Zenuwblokkade met LA
- Radiofrequente zenuwblokkade

Knie - Anatomie



- TARGET?
- Dorsal root ganglion
- Majeure zenuw
- Peri-articulaire zenuwen

www.nysora.com

Knie - Techniek

- Eerst positieve diagnostische blokkade!
- Nervus Genicularis:
 - Superomediaal
 - Superolateraal
 - Inferomediaal.
- Fluoroscopie:
 - AP overgang epifyse-metafyse
 - Lateraal midden femur/tibia
- Echografie: arterie genicularis

Kníe - Techniek



Knie - Techniek

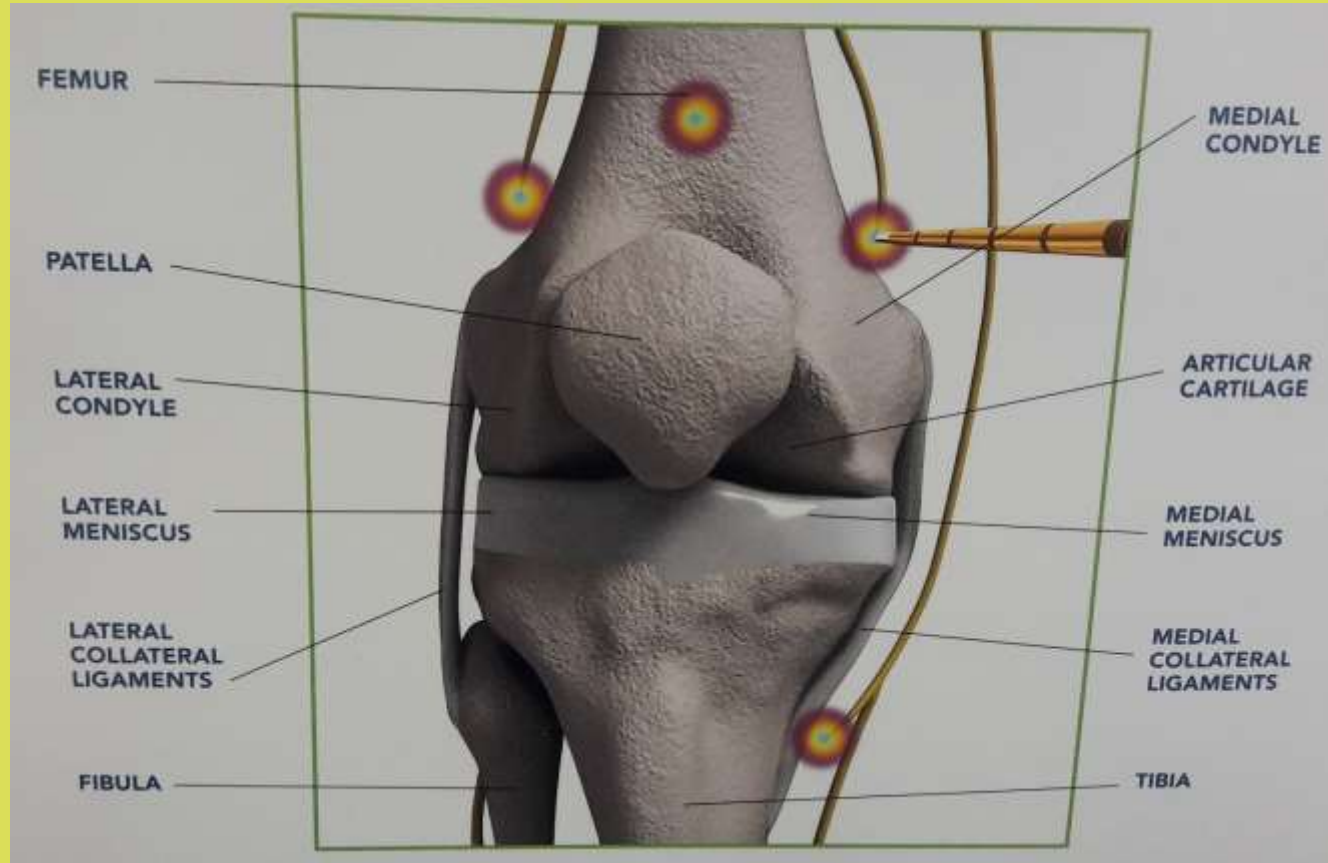


Davis T, et al. Reg Anesth Pain Med. 2018; Jan; 43(1): 84-91.

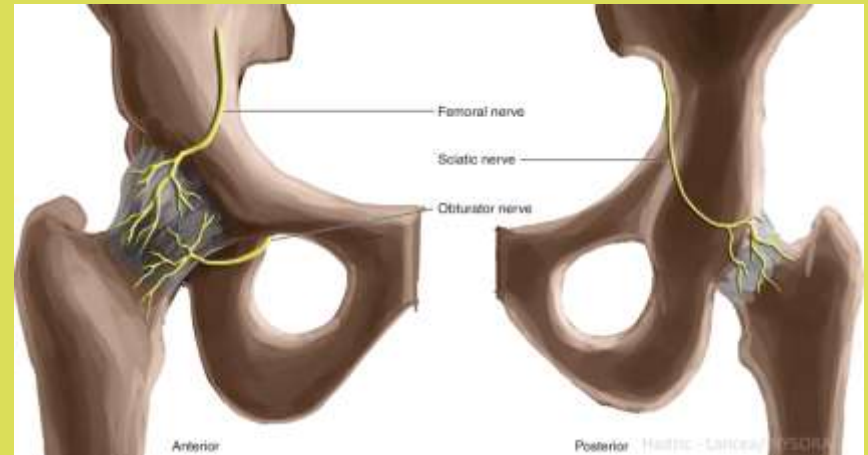
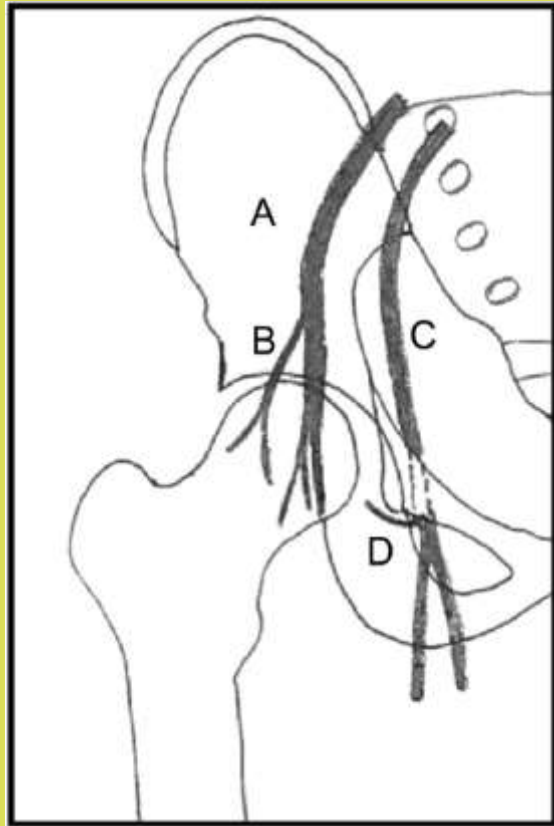


Kim D, et al. Pain physician. 2018; 21: 41-51.

Knie - Techniek



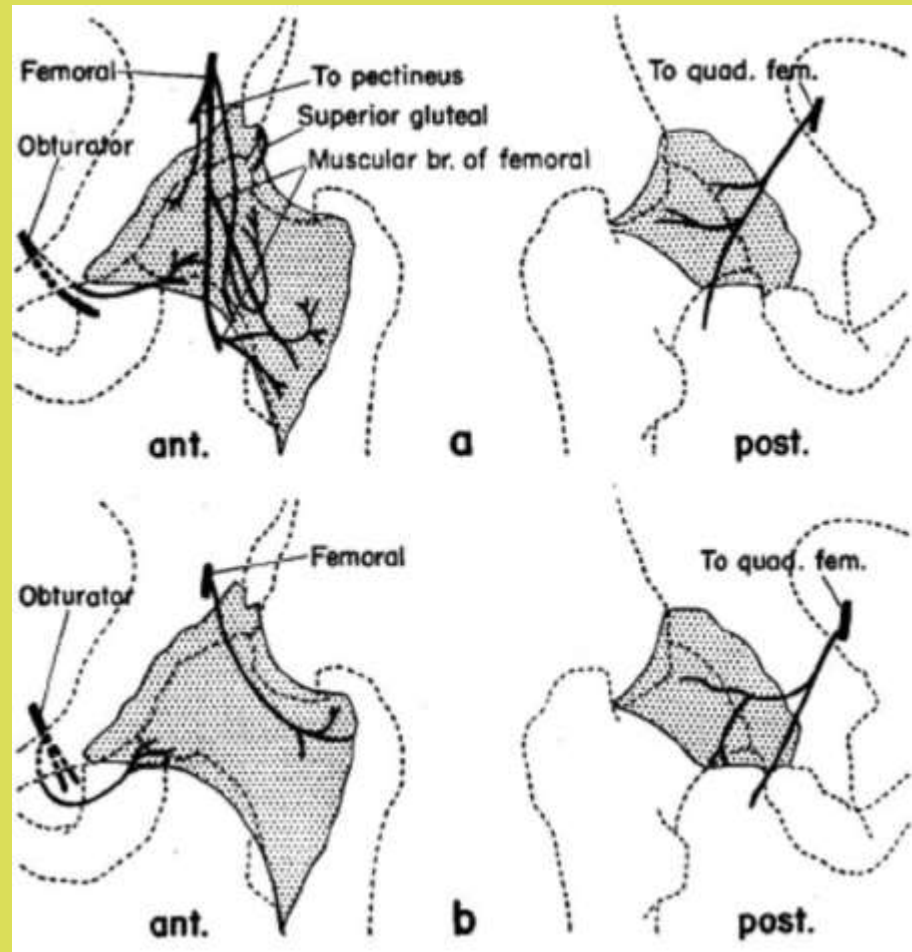
Heup - Anatomie



www.nysora.com

Hernández-González L, et al.
Phys Med Rehabil Clin N Am.
2018; Feb; 29(1): 61-71.

Heup - Anatomie

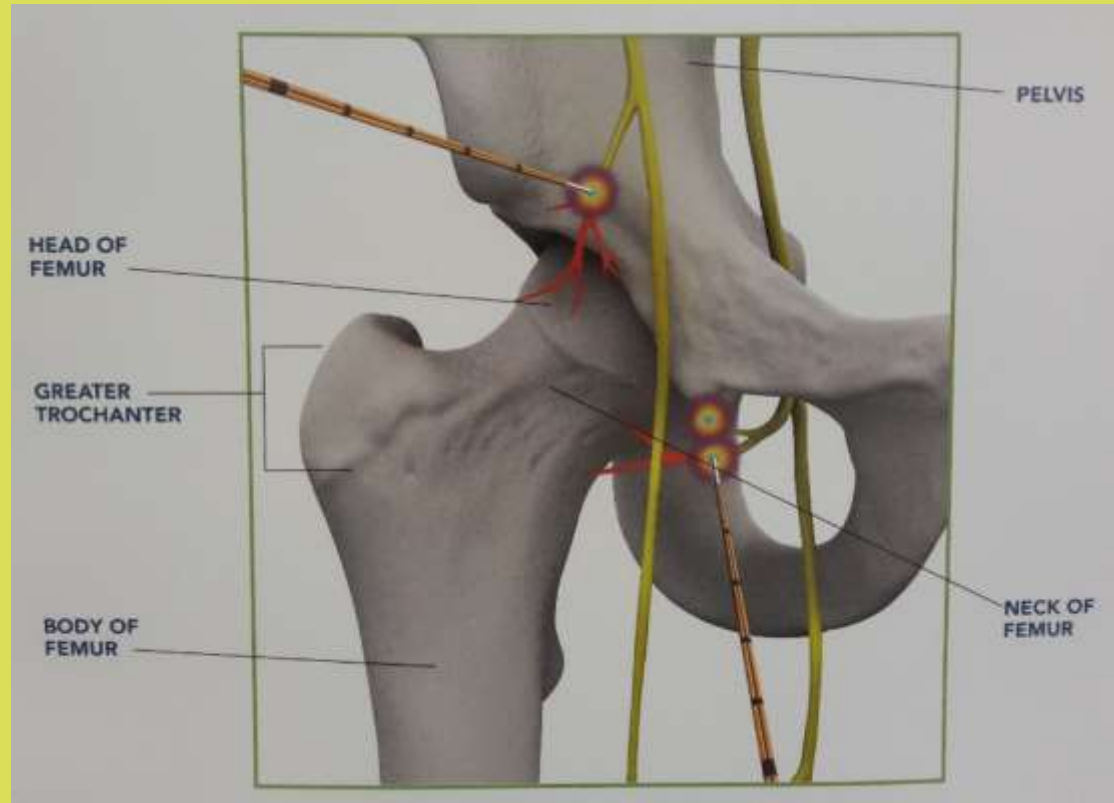


Short AJ, et al. Reg Anesth Pain Med. 2018; Feb; 43(2): 186-192.

Heup - Techniek

- Eerst positieve diagnostische blokkade!
- Obturator
 - Teardrop (junctie pubis-ischium)
- Femoralis
 - Inferior/mediaal van anterior inferior iliac spine

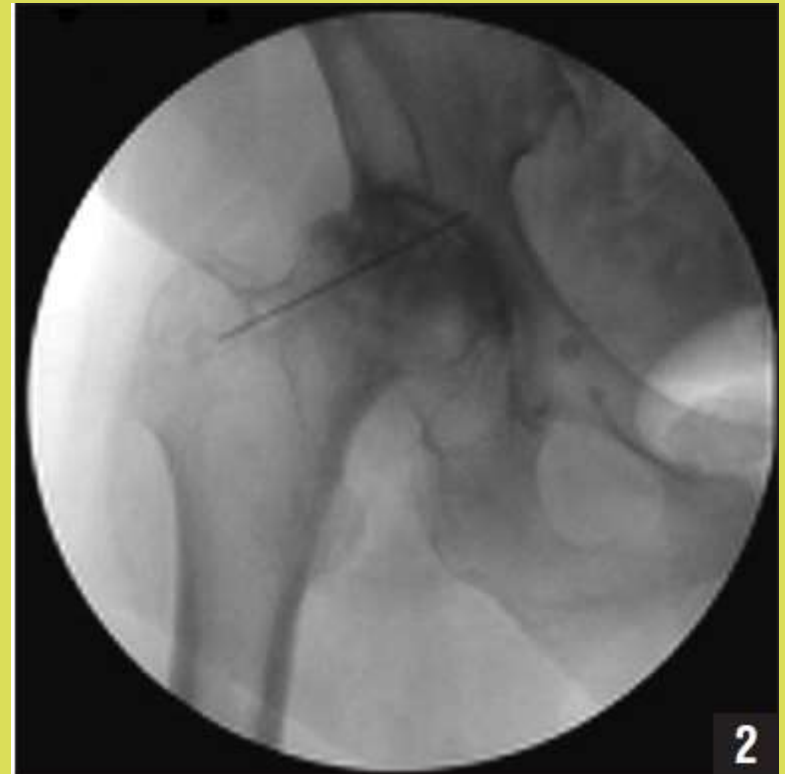
Heup - Techniek



Heup - Techniek



Locher S, et al. Pain Med 2008; Apr; 9(3): 291-8.



Rivera F, et al. Orthopedics 2012; Mar 7; 35(3): e302-5.

Techniek

- Sensorische stimulatie (50 Hz) met paresthesiën $< 0.5V$
- Motorische stimulatie (2 Hz) afwezig
- RF behandeling: $70^{\circ}C$ voor 90 seconden
- Geen corticosteroiden!

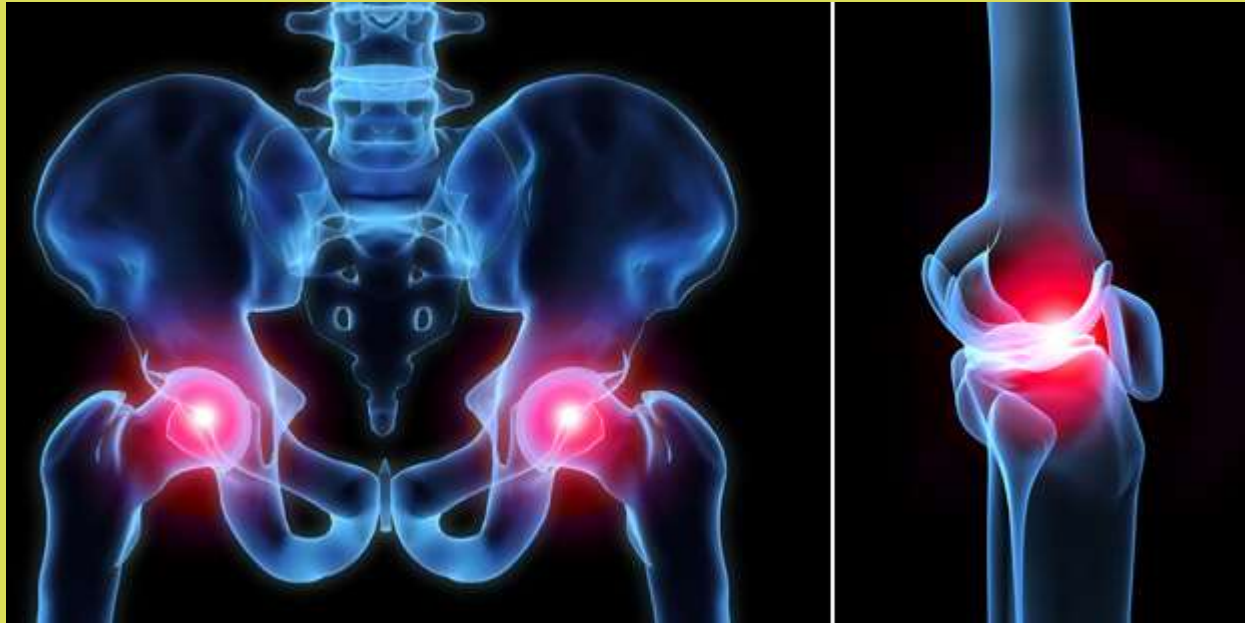
Indicatie

- Bevestigde knie- of heuppijn met falen conservatief beleid

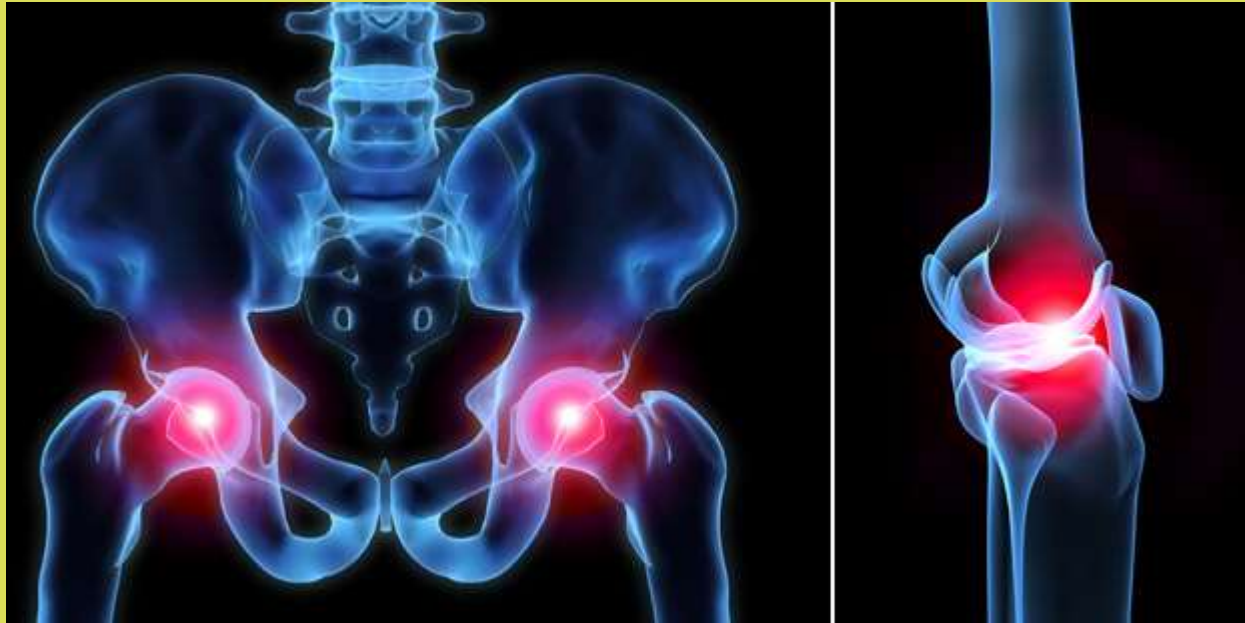
EN

- Chirurgie is geen mogelijkheid (comorbiditeit, implant falen, patiënt weigering, lange wachttijd,...)
- Persisterende pijn na THP/TKP

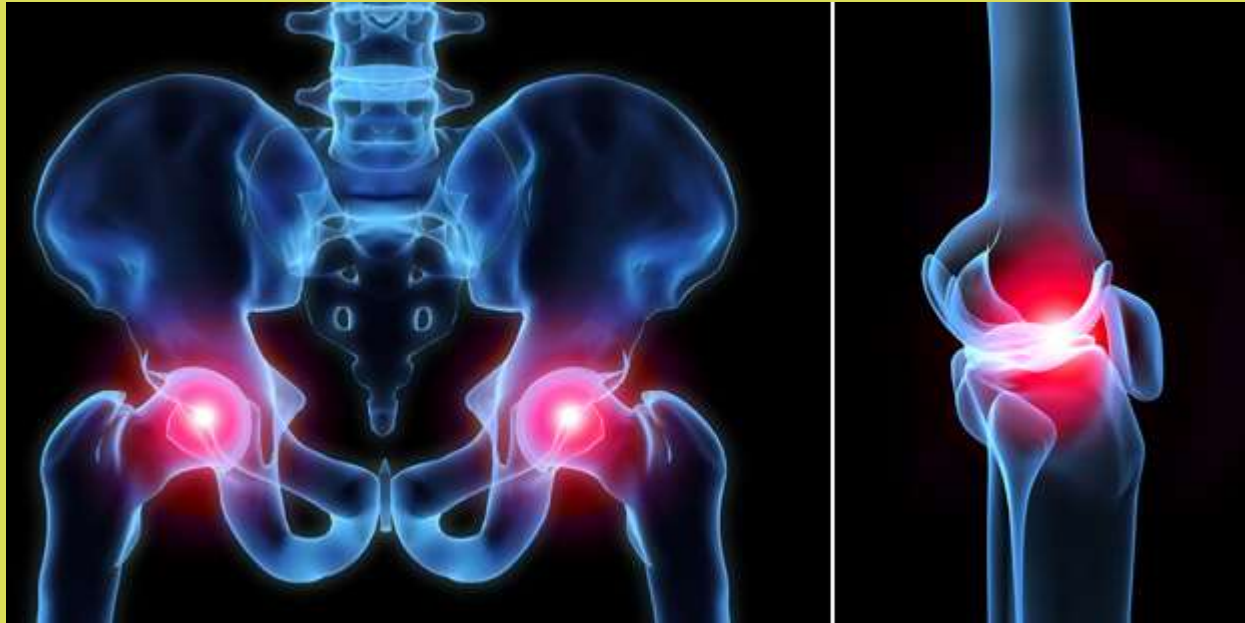
Vragen?



Vragen?



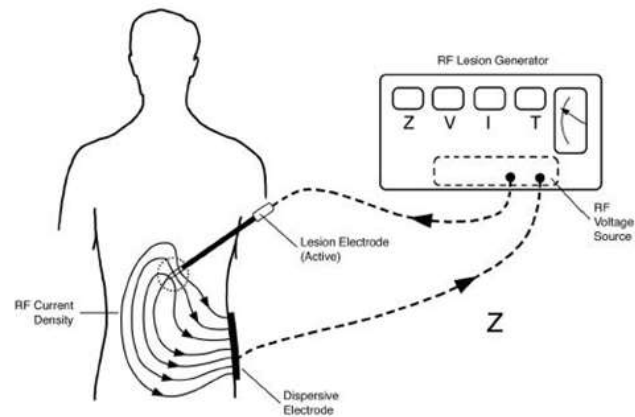
Vragen?



Radiofrequentie

Radiofrequency treatment

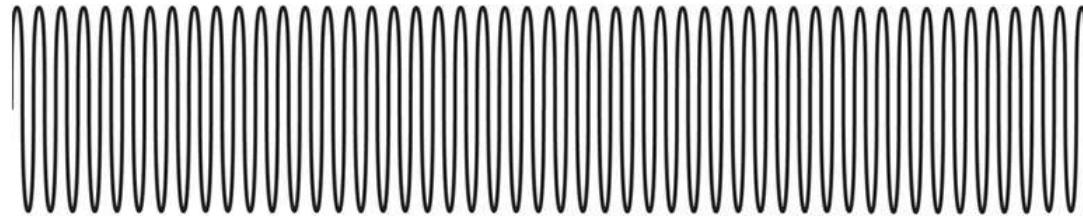
- High frequency electrical current adjacent to a nerve
 - change in structure → changed pain conduction



Radiofrequentie

Two methods of RF application

Continuous radiofrequency (CRF)



Pulsed radiofrequency (PRF)

